

The background of the page is a dark, textured surface, possibly a door or a wall, with a grid pattern. The texture is a mix of dark blue, grey, and black, with some lighter, mottled areas. A small, round, brass-colored knob is visible on the left side of the grid.

ELEMENT

COLLECTION

ROCKY MOUNTAIN
H A R D W A R E

HANDCAST BRONZE HARDWARE | 12 FINISH OPTIONS



Element privacy escutcheon (E10101/IP10101) shown with Olympus lever (L135) in white bronze dark



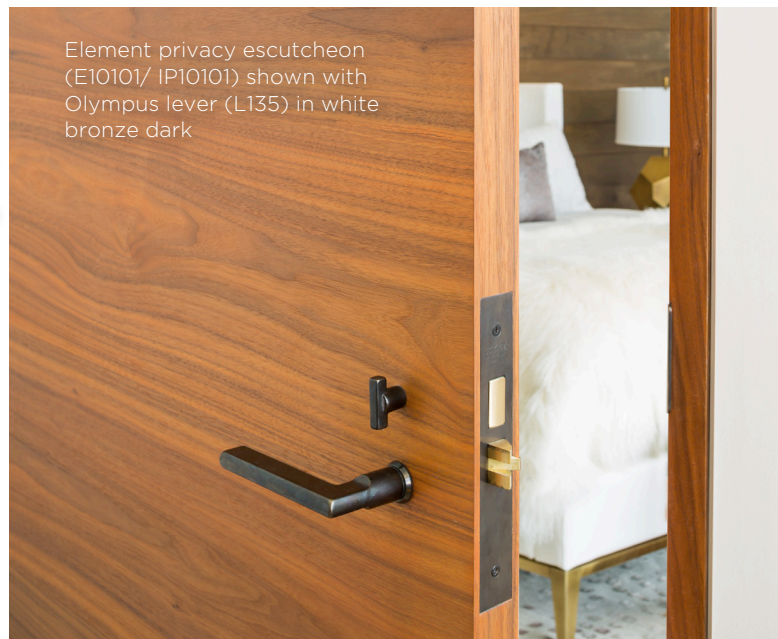
Element passage escutcheon (E10101) shown with Hitch knob (K202) in silicon bronze medium

INTRODUCING ELEMENT C O L L E C T I O N

Featuring a minimal profile, Element allows the beauty of art-grade bronze handles to elegantly punctuate the thoughtful design of any custom door. Available in a range of 12 hand applied finishes, this collection is compatible with all mortise lock functions, from entry through passage. With its considerate simplicity, Element lets a standout interior design shine.



Element entry escutcheon (E10101) and custom lock shown with Olympus Return lever (L137) and Keypad Entry System (Key400) in silicon bronze dark lustre

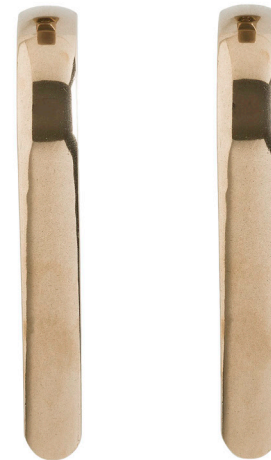
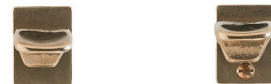


Element privacy escutcheon (E10101/ IP10101) shown with Olympus lever (L135) in white bronze dark

ENTRY HARDWARE



FUNCTION ELEMENT ENTRY SET
PART # E10101/E10101 with DB205
LEVER CROSS L267
PATINA WHITE BRONZE LIGHT



FUNCTION ELEMENT THUMBBLATCH ENTRY SET
PART # G10107/G10106
GRIP CIVIC G254
PATINA SILICON BRONZE HIGH POLISHED

Cutsom Element entry shown
 with Olympus grip (G671) in
 silicon bronze dark lustre



INTERIOR HARDWARE



FUNCTION ELEMENT PRIVACY SET
PART # E10101/E10101 with IP10101
LEVER TROLLEY L260
PATINA WHITE BRONZE MEDIUM



Element privacy escutcheon (E10101/IP10101) shown with Olympus Return lever (L137) in silicon bronze dark lustre



FUNCTION ELEMENT PATIO SET
PART # E10101/E10101 with IP10101
LEVER STALK L154
PATINA SILICON BRONZE DARK



FUNCTION ELEMENT PASSAGE SET
PART # E10101/E10101
KNOB ORE K236
PATINA SILICON BRONZE HIGH POLISHED



Element privacy escutcheon (E10101/IP10101) shown with Jane lever (L307) in silicon bronze dark lustre

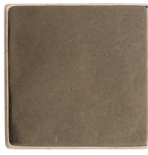


FUNCTION ELEMENT PASSAGE SET
PART # E10101/E10101
LEVER BLADE L311
PATINA WHITE BRONZE DARK

FINISH OPTIONS



SILICON BRONZE
LIGHT (BL)



WHITE BRONZE
LIGHT (WL)



SILICON BRONZE
MEDIUM (BM)



WHITE BRONZE
MEDIUM (WM)



SILICON BRONZE
DARK (BD)



WHITE BRONZE
DARK (WD)



SILICON BRONZE
RUST (BR)



WHITE BRONZE
BRUSHED (WBB)



SILICON BRONZE
BRUSHED (BBB)



WHITE BRONZE
HIGH POLISHED
(WHP)



SILICON BRONZE
DARK LUSTRE
(BDL)



SILICON BRONZE
HIGH POLISHED
(BHP)

All Rocky Mountain Hardware products are cast of solid bronze and available in a choice of 12 hand applied finishes. These photos give a close representation of the true appearance of these finishes, however various elements of time, touch and climate work together with the bronze to create a unique hue.

Visit our website to learn more about our product offering,
finish options and capabilities.

www.rockymountainhardware.com

Follow us:   

ROCKY MOUNTAIN
H A R D W A R E

HANDCAST BRONZE HARDWARE | 12 FINISH OPTIONS



Element passage escutcheon (E10101)
shown with Olympus lever (L135) in silicon
bronze dark lustre