



STYLE GUIDE

ELEVATING THE STANDARD

START HERE

AND THEN GO ANYWHERE

Arrive at a style. An era. A place that people want to call home. From Georgian to Mediterranean, Arts and Crafts to today's traditional, and so much more. Fypon brings you architecturally correct pieces that help you achieve an authentic, coordinated look — inside and out.

Inspiration is easy to find here. Page through to see how our products can work together, and how easy it is to make them work for you. This guide also puts at your fingertips the design details that are the hallmarks of today's most popular home styles.

Use this catalog, along with our Polyurethane catalog, to find all the styles and sizes you need for adding interior and exterior touches that truly set apart a home. Thanks to our extensive research and attention to detail, we've created beautiful moulding and millwork in your choice of a remarkably clean, smooth finish, or the genuine look of finely finished wood and classic stone.

TABLE OF CONTENTS

7

DEFINING
STYLE

15

ARCHITECTURAL
ORIGINS

42

BEAUTY WITHOUT
BOUNDARIES

43

THIS IS GOING
TO BE FUN

ELEVATING THE STANDARD



STYLE

An eye for detail. A history of durability. The design expertise to benefit every project. Fypon delivers lasting style for homeowners, and helps builders add beauty to every home. From ornate to understated, vintage to modern, we've designed an incredible range of millwork products that transcend into timeless styles.



PERFORMANCE

Fypon polyurethane products differ from traditional building materials because they have a closed-cell structure. They cannot be penetrated by moisture or insects. So, whether your project calls for functional or decorative pieces, you get added durability — without rotting, warping, cracking, chipping or peeling — and fewer call-backs. Along with superior performance, Fypon products are easy to work with. They do not require special tools for installation, and come ready to paint or stain.*



PARTNERSHIP

Choosing Fypon also means getting the service and support you need at every phase of your project. Beginning with planning and takeoff, we're a reliable partner all the way through project completion. As an industry leader, we offer a Lifetime Limited Warranty for homeowners.

* See www.fypon.com for instructions on proper maintenance, installation, and painting or staining.



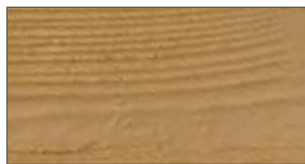
NEW TEXTURES FOR 2015

To expand on a variety of product offering, Fypon is introducing one new texture for 2015 — classic woodgrain.

Close-ups of all textures available are shown below and you will see the new textures presented in this style guide offering. All other textured product can be found in our polyurethane catalog.*



Classic Woodgrain **NEW**



Standard Woodgrain



Smooth



Stone



Milled Style Beams



Tahoe Style Beams



Mesa Style Beams

FEATURES & BENEFITS



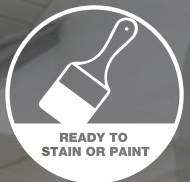
LOW MAINTENANCE

*Lasting performance and minimal upkeep compared to other materials.**



QUICK & EASY INSTALL

*Lightweight and does not require special tools.**



READY TO STAIN OR PAINT

*Polyurethane smooth or textured — comes pre-primed and ready to paint or stain.**



RESISTS INSECTS

Our closed-cell polyurethane is resistant to insects.



RESISTS MOISTURE

Ideal for moisture-prone interior spaces like bathrooms, kitchens and basements.



WEATHER RESISTANT

Beautiful and durable in all seasons, withstands the elements better than traditional materials.

REFERENCE POINTS

Throughout the catalog you will see these various colored points (shown below) beside part numbers - these reference points are for you to visually see the product in use on the image associated to the product offering.



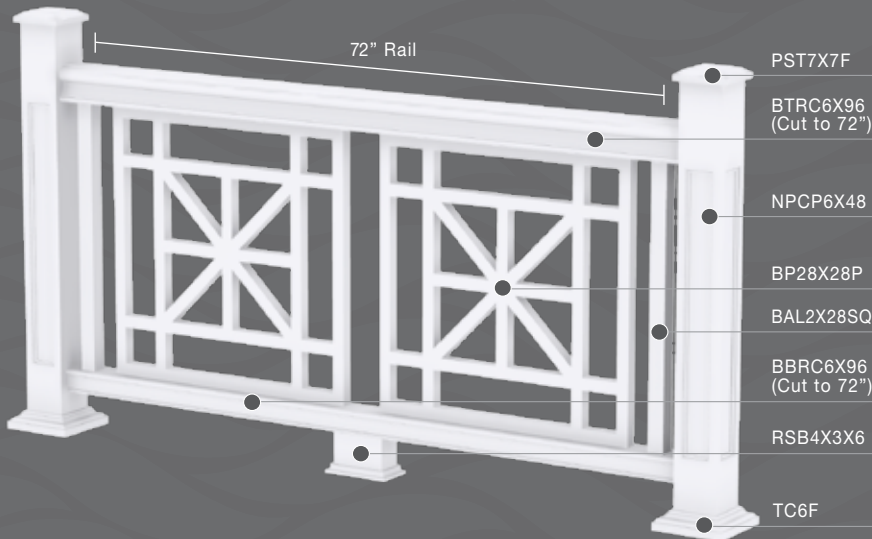
* See www.fypon.com for instructions on proper maintenance, installation, and painting or staining.

BEAUTIFUL BOUNDARIES

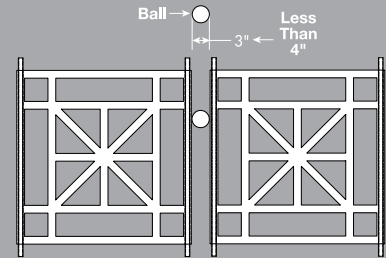
Fypon balusters and baluster panels come in a range of beautiful designs. When designing with these components, calculating the center spacing dimension is key.

Measuring for Balusters

If you are using baluster panels, determine how many of them you wish to use first, then fill in the remaining space between the panels and newels with balusters. The maximum center-to-center distance between panels, balusters and newels should not allow a 4" ball to pass through at any point.



Baluster Combination Example



BP28X28P requires 31 1/2" on center spacing

BAL2X28SQ requires 5 11/16" on center spacing

Rail Span ÷ Center Spacing =
No. of balusters needed

Note: Begin by determining how many baluster panels will fit on your rail span, then figure additional balusters.

4 Easy Steps

$$\frac{72''}{\text{rail length}} \div \frac{31.5}{\text{panel center spacing}} = \frac{2.29}{\text{\# of panels needed}}$$

(round down to 2 - you will fill remaining space with BAL2X28SQ)

$$\frac{2 \text{ panels}}{28'' \text{ length each}} \text{ spaced } 3'' \text{ apart} = 59''$$

$$\frac{13''}{\text{remaining length left on rail}} \div \frac{5.6875}{\text{baluster center spacing}} = \frac{2.29}{\text{\# of balusters needed}} \text{ (round to 2)}$$

Suggested baluster placement:
1 baluster on each end of rail with 2 3/8" spacing between square baluster & newel post

DEFINING STYLE



THE PIECES AND PROPORTIONS

Creating the right look starts with using the right pieces. And on home after home, Fypon delivers fresh ideas for adding character and beauty. As you explore design ideas, use this guide to help you choose the appropriate elements—and determine where to place them for maximum impact. Size and proportion are just as important. So, rely on our expertise to help you determine the correct measurements for using our pieces in any space, whether it's inside or outside.

DEFINING THE **EXTERIOR**

① SHUTTERS

Lightweight louvered or paneled decorative frames that equal the window width located on the sides of a window.

② TILE VENT

A decorative piece mounted near the ridge of the roof—seen most on Mediterranean/Spanish style homes.

③ CORBEL

An architectural member projecting from the face of a wall.

④ BRACKET

A decorative unit, in which two sides form a right angle with one arm flush against a wall and the other flush beneath the projecting surface.

⑤ GABLE VENT/LOUVER

A building component installed into the side wall to allow ventilation and/or decoration on a building. A non-ventilation louver that is to be used as a decorative building accent is known as a decorative louver. A louver with open slats to allow ventilation into the attic area is known as a functional louver.

⑥ RAILING SYSTEM

A structure made of bars and supports and forming a barrier or guard.

⑦ COLUMN

Supporting or decorative pillar used in building.

⑧ CAP & BASE

Upper & lower member of an entrance, wainscot, column or pilaster.

⑨ WINDOW & DOOR TRIM

The finish materials on a building, applied around the window and door openings.

⑩ DENTIL BLOCK

Smaller rectangle block which can be spaced closely together in a series or in sequence with moulding.

⑪ RAFTER TAIL

Any one of a set of sloping beams that form the framework of a roof.







HOW THICK?

THE HIGHER THE ROOF AND THE BIGGER THE PORCH, THE THICKER THE COLUMN SHOULD BE.

$\frac{1}{2}$

THE SIZE OF A WINDOW DETERMINES THE WIDTH AND HEIGHT OF A SHUTTER. THE WIDTH OF SHUTTERS USED IN PAIRS ON A WINDOW SHOULD BE HALF THE WIDTH OF THE WINDOW, AND SHOULD BE THE SAME HEIGHT OF THE WINDOW.



HOW TALL?

THE HIGHER THE CEILING,
THE TALLER THE BASEBOARD
SHOULD BE.

10%

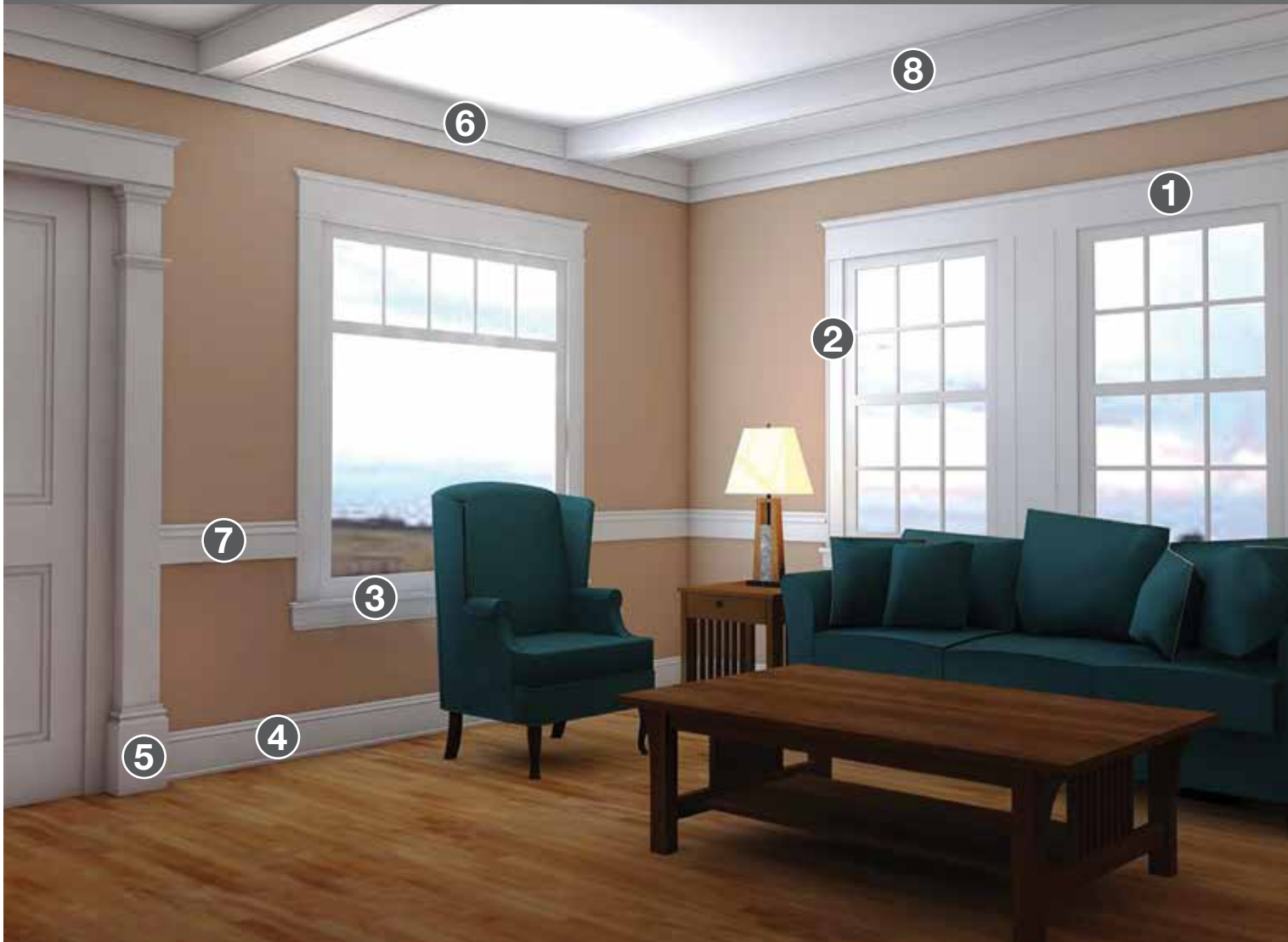
ADD AN ADDITIONAL 10%
TO THE OVERALL LENGTH
OF MOULDING NEEDED TO
COMPENSATE FOR WASTE.

HOW HIGH?

BASEBOARD MOULDING
HEIGHT SHOULD ALWAYS BE
LARGER THAN THE CASING.



DEFINING THE INTERIOR



DEFINITIONS

- ① CROSSHEAD**
Decorative form that resembles a lintel used to top a door or window, consisting of a breastboard with crown moulding surrounding the top portion, and moulded together as one piece.
- ② CASING**
The frame around a door or window.
- ③ APRON**
A trim board that is installed below a window sill.
- ④ BASEBOARD**
Moulding applied around the perimeter of a room at the point of intersection of the wall and finish floor.
- ⑤ PLINTH BLOCK**
Square block at the base of a pilaster or around a door opening; thicker and wider than the butting members.
- ⑥ CROWN MOULDING**
A moulding used wherever an interior angle is to be covered, especially at the roof and wall corner.
- ⑦ CHAIR RAIL**
A moulding on an interior wall for preventing the backs of chairs from rubbing against the wall.
- ⑧ BEAM**
Exposed on the ceiling as part of the room design. Fypon beams are for decorative purposes and can be designed according to the stylistic preferences of the homeowner.



MOULDING MATTERS

Thinking about your moulding options? The size of your interior space should guide your measurements — the higher the ceiling, the wider the moulding.

Use the chart to the right to determine the correct size moulding for the rooms you have in mind.

TIP:

CHAIR RAILS SHOULD
BE 1/2" - 1" NARROWER
THAN CASING

| CEILING HEIGHT | UP TO 8' | 9-11' | 12'+ |
|------------------|-------------|-----------------|---------|
| CROWN HEIGHT | 3" - 6" | 6" - 9" | 9"+ |
| CASING HEIGHT | 3 1/4" | 3 1/4" - 4 1/4" | 4 1/4"+ |
| BASEBOARD HEIGHT | 3" - 4 1/4" | 4 1/4" - 6 1/4" | 6 1/4"+ |

HOW SEAMLESS?

FYPON PIECES ARE MOULDED INTO ONE PIECE, UNLIKE MANY OTHER COMPANIES' BUILD-UPS THAT USE MULTIPLE COMPONENTS TO ACHIEVE THE SAME LOOK.

1/3

WHEN INSTALLING A CHAIR RAIL, REMEMBER THE RULE OF THIRDS. WHETHER OR NOT YOU ALSO USE WAINSCOTING, YOU CAN MAKE A ROOM FEEL TALLER BY PLACING THE CHAIR RAIL ONE-THIRD OF THE WAY UP FROM THE FLOOR.

ARCHITECTURAL ORIGINS:



A LOOK AT POPULAR HOME STYLES

From events throughout history to outright necessity, the inspiration for today's home designs is rich and varied. We researched the origins of each of our pieces to ensure they are architecturally correct, so you can design a home that stands out and stays true to a homeowner's style.

CLASSIC • ARTS & CRAFTS • MEDITERRANEAN
COUNTRY/COTTAGE • TODAY'S TRADITIONAL





TODAY'S FEATURES



BEGINNINGS



ARCHITECTURAL PROGRESSION

CLASSIC: GEORGIAN

Georgian style was one of the first variations of Classic style. Its name comes from the succession of English kings in the 1700s, and was used on American homes throughout the century. The front of a Georgian home is easy to recognize, with its centered and paneled front door, usually with a structure on top and pilasters on either side. Decorative mouldings — the use of dentils was common — were used to draw the eye to the cornice.

GEORGIAN STYLE

IDENTIFYING FEATURES:

- One- or two-story box with strict symmetry
- Front panel door is centered, capped with an elaborate crown/structure supported by decorative pillars
- Decorative mouldings, usually dentil work, embellish the cornice
- Multi-pane windows are not typically paired
- Window arrangements are symmetrical (vertically or horizontally)



CLASSIC
TOP RAIL*

BTRC6X96 • Smooth **NEW**



DORIC CAP*

DC-8 • Smooth **NEW**



RAIL SUPPORT
BLOCK*

RSB4X3X6 • Smooth **NEW**

9" CROSSHEADS WITH KEYSTONE

As seen on page 13 of
Polyurethane Catalog

DENTIL MOULDING

As seen on page 94 of
Polyurethane Catalog

RAISED PANEL SHUTTERS

As seen on page 50 of
Polyurethane Catalog



CLASSIC
BOTTOM RAIL*

BBRC6X96 • Smooth **NEW**



DORIC BASE*

DB-8 • Smooth **NEW**



TRIM
COLLAR - FANCY*

TC6F • Smooth **NEW**



NEWEL POST-
CORNER PANEL*

NPCP6X48 • Smooth **NEW**



NEWEL POST-
STRAIGHT PANEL*

NPSP6X48 • Smooth **NEW**



COLUMN**

COL8X120R • Smooth **NEW**



FLAT POST CAP

PST7X7F • Smooth



BALUSTER
PANEL*

BP28X28S • Smooth **NEW**

More styles of the baluster panel available in our polyurethane catalog.

To assist with any spacing issues you may come across when installing your structural panel rail system, square balusters are available in the polyurethane catalog to fill in any extra space.

*Available to order April 2015

**Load bearing capacity is 12,000 lbs.



BEGINNINGS



ARCHITECTURAL PROGRESSION

TODAY'S FEATURES

CLASSIC: FEDERAL

Federal architecture followed the Georgian look as the next interpretation of Classic style in America. Federal homes maintain the look of Classic symmetry, but introduce more curved lines, such as a semi-circular fanlight over the centered front door and elliptical-shaped areas for the interior. Some Federal homes even added curved wings to the simple, Classic box style.

FEDERAL STYLE

IDENTIFYING FEATURES:

- Simple architecture, two to three rooms deep
- Small entry porch
- Doors and windows use strict symmetry
- Three-part Palladian-style windows are common
- Decorative mouldings embellish the cornice
- Multi-pane windows are not typically paired
- Window arrangements are symmetrical (vertically or horizontally)



CLASSIC
TOP RAIL*

BTRC6X96 • Smooth **NEW**



RAIL SUPPORT
BLOCK*

RSB4X3X6 • Smooth **NEW**



BALUSTER
PANEL*

BP28X28P • Smooth **NEW**



CLASSIC
BOTTOM RAIL*

BBRC6X96 • Smooth **NEW**



TRIM
COLLAR - FANCY*

TC6F • Smooth **NEW**

COMBINATION
PEAKED CAP
PEDIMENT

As seen on page 28 of
Polyurethane Catalog

FLUTED
PILASTER

As seen on page 35 of
Polyurethane Catalog

RAISED PANEL
SHUTTERS

As seen on page 50 of
Polyurethane Catalog

EYEBROW
CROSSHEAD

As seen on page 18 of
Polyurethane Catalog

DENTIL
MOULDING

As seen on page 94 of
Polyurethane Catalog



NEWEL POST-
CORNER PANEL*

NPCP6X48 • Smooth **NEW**



NEWEL POST-
STRAIGHT PANEL*

NPSP6X48 • Smooth **NEW**



FLAT POST CAP

PST7X7F • Smooth

More styles of the baluster panel available in our polyurethane catalog.

To assist with any spacing issues you may come across when installing your structural panel rail system, square balusters are available in the polyurethane catalog to fill in any extra space.

*Available to order April 2015



BEGINNINGS



ARCHITECTURAL PROGRESSION

CLASSIC: VICTORIAN

As the Victorian era came into popularity in the United States during the last half of the 1800s, out went the symmetrical look that had, until then, dominated Classic architecture. Advancements in home construction, along with the excess of the time period, resulted in increasingly complex home designs with ornate details. Victorian homes are typically two or three stories, and are designed with multiple textures, decorative trim and even towers.

VICTORIAN STYLE

IDENTIFYING FEATURES:

- Irregularly shaped, steeply pitched roofs with patterned shingles
- Wall surfaces serve as primary decorative elements
- Expanses of wall are accented with varying textures and elements, including bays, towers, overhangs and projections
- Porches use ornamental spindlework, most commonly on balustrades
- Surrounds for windows and doors are simple



CLASSIC
BOTTOM RAIL*

BBRC6X96 • Smooth **NEW**



CLASSIC
TOP RAIL*

BTRC6X96 • Smooth **NEW**



RAIL SUPPORT
BLOCK*

RSB4X3X6 • Smooth **NEW**

DESIGNED FOR DETAIL IDEAL MATERIAL FOR EVEN THE MOST INTRICATE HISTORICAL REPRODUCTIONS



GABLE
PEDIMENT

GPF66X33 • Smooth



PORCH POST
COLONIAL

PP5X102 • Smooth



BALUSTER-
ASHLEY

BAL3X36AY • Smooth



BRACKET

BKT14X12 • Smooth

*Should you want to carry over your front porch design to a back patio, newel posts are available in our polyurethane catalog.

*Available to order April 2015

CLASSIC: INTERIOR

GEORGIAN • FEDERAL • VICTORIAN

The Classic architecture style has its roots in ancient Greece and was used on a grand scale in America during Colonial times. It was used extensively on government and public buildings, and the look soon became popular for homes.

Exterior elements, like columns and arches are also used for the interior — columns and their structures can dictate the proportions for baseboards and mouldings. Over time, Classic architecture has taken on several variations.

CASING NEW

MLD1003-12 • Smooth



CROWN NEW

MLD1001-12 • Smooth



BASEBOARD NEW

MLD1008-12 • Smooth



CROSSHEAD NEW

CHTD33X5.5 • Smooth



CHAIR RAIL NEW

MLD1005-12 • Smooth



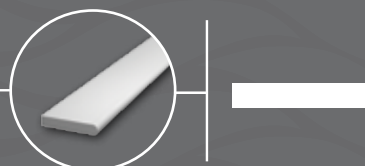
PLINTH BLOCK NEW

PBTD4X5.25 • Smooth



SILL NEW

MLD1007-12 • Smooth





CLASSIC INTERIORS EMPHASIZE SYMMETRY THAT STEMS FROM A FOCAL POINT, SUCH AS A FIREPLACE OR A GRAND STAIRCASE



TODAY'S FEATURES



BEGINNINGS



ARCHITECTURAL PROGRESSION

ARTS & CRAFTS

The dawn of the Machine Age and the industrialization of England resulted in a renewed appreciation for design and craftsmanship. This movement came to America in the 1890s, and was characterized by features such as low-pitched, gabled roofs, full- or partial-width porches supported by tapered square columns, and the use of natural materials. Inside an Arts and Crafts style home, the movement embraced open floor plans, exposed beams, and mouldings. Arts and Crafts homes are also known for having many built-in elements, like seating, shelves and cabinets. Over time, Arts and Crafts style evolved into several variations, including Craftsman, Mission and Prairie.

ARTS & CRAFTS STYLE

IDENTIFYING FEATURES:

- Low-pitched, gabled roofs
- Full- or partial-width porches, with roofs supported by tapered columns
- Extra stickwork in gables and porches
- Wide overhangs with exposed and/or elaborated rafter ends
- Roof wall junctions with triangular knee braces



BEAM♦

NEW

BMCE4X8X144S • Woodgrain



BRACKET♦

NEW

BKT26X24X4S • Woodgrain



SQUARE
TOP RAIL♦

NEW

BTRS6X96 • Smooth



SQUARE
BOTTOM RAIL♦

NEW

BBRS6X96 • Smooth



RAIL SUPPORT
BLOCK♦

NEW

RSB4X3X6 • Smooth

TIMBER TRELLIS

As seen on page 148 of
Polyurethane Catalog

8" CROSSHEAD

As seen on page 19 of
Polyurethane Catalog

SQUARE BALUSTER

As seen on page 176 of
Polyurethane Catalog

FLAT TRIM

As seen on page 80 of
Polyurethane Catalog

DENTIL BLOCK

As seen on page 111 of
Polyurethane Catalog

FISHSCALE PANEL

As seen on page 127 of
Polyurethane Catalog

Should your home/drawing not have a build-up structure for the tapered column, newel posts and columns are available in our polyurethane catalog.

♦Available to order April 2015



ARTS & CRAFTS: INTERIOR

APRON **NEW**

MLD1016S-12 • Classic Woodgrain



CROWN **NEW**

MLD1011S-12 • Classic Woodgrain



CASING **NEW**

MLD1014S-12 • Classic Woodgrain



CROSSHEAD **NEW**

CHAC33X5.5S • Classic Woodgrain



BASEBOARD **NEW**

MLD1018S-12 • Classic Woodgrain



PLINTH BLOCK **NEW**

PBAC5.25S • Classic Woodgrain



BEAM **NEW**

BM4X5X192S • Classic Woodgrain



Classic
Woodgrain

NEW TEXTURE
FOR 2015

EXCELLENT AFFORDABILITY
COSTS LESS THAN WOOD TO INSTALL & MAINTAIN*

EASE OF INSTALL

ONE-PIECE CONSTRUCTION ALLOWS FOR MORE
DETAIL WITH FAR LESS LABOR THAN BUILT-UP WOOD DETAILS





TODAY'S FEATURES



BEGINNINGS



ARCHITECTURAL PROGRESSION

MEDITERRANEAN

Take a look at a Mediterranean home, and it's easy to see how a blend of Spanish, Greek and Italian styles has influenced its design. These homes are known for having low-pitched, tile-covered roofs and stucco walls. The arched entrances often feature decorative accents around the door, such as pilasters, spiral columns, tile or stone. The interior layout and decor are inspired by the idea that a Mediterranean home is designed around lush gardens, courtyards, and ornate fountains. Interiors often feature arched doorways, high ceilings with exposed beams, and open floor plans.

MEDITERRANEAN STYLE

IDENTIFYING FEATURES:

- Low pitched, red tile roofs with shallow overhangs
- Stucco walls and chimney
- Towers with a round or square shape
- Open or roofed balconies with railings
- Arched, wind-wall double-sash doors, frequently opening onto balconies or patios



CORBEL*

NEW

CORCV18X12X6ST • Stone



CORBEL*

NEW

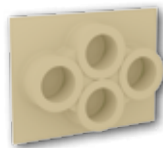
COROG20X7ST • Stone



CORBEL*

NEW

COR7X11ST • Stone



TILE VENT*

NEW

TV14X18-4FRC • Smooth



SHUTTERS*

NEW

SH3PHLR18X80S • Woodgrain

*Available to order April 2015

* Load bearing capacity is 12,000 lbs.

MEDITERRANEAN: INTERIOR

CROWN **NEW**

MLD1021S-12 • Classic Woodgrain



TIMBER BEAM

As seen on page 149 of Polyurethane Catalog

BASEBOARD **NEW**

MLD1026S-12 • Classic Woodgrain



Classic
Woodgrain

NEW TEXTURE
FOR 2015

SAME-DAY STAIN



All Fypon® polyurethane products can be stained with our Same-Day Stain to create the authentic look of real wood in just a few simple steps. Visit www.samedaystain.com for more details.



LONG LASTING
MORE DURABLE, YET LOWER-MAINTENANCE THAN WOOD



TODAY'S FEATURES



BEGINNINGS



ARCHITECTURAL PROGRESSION

COUNTRY/COTTAGE: FARMHOUSE

The first farmers to build houses in America's heartland didn't have time for adding extravagant details to their homes. The architecture was boxy and rugged, constructed using the timber and stones that were cleared from the farmers' fields. Multi-paned windows provided views of the surrounding acreage. In good times, wrap-around porches were often added, but with simple columns and railings.

FARMHOUSE STYLE

IDENTIFYING FEATURES:

- Typically a two-story building with gabled front
- Large porch with simple columns usually spans the house
- Windows and doors have simple trim details



TRIM COLLAR
TC6 • Smooth



6" CROSSHEAD
Smooth
(As seen on page 10 of polyurethane catalog)



FLAT TRIM
FLT100-12 • Smooth

INCREASE RESALE
LOW MAINTENANCE BEAUTY ADDS VALUE TO ANY HOME*



LOUVER*
LV12X24-4F6WCH • Smooth

NEW



LOUVERED
SHUTTERS
LVSH18X60FNB • Smooth



PORCH POST
PP6X96FBSQ • Smooth



BRACKET
BKT14X16X4 • Smooth

Don't see a size/style you need? Visit our polyurethane catalog for additional sizes & styles to suit your project needs.

*Available to order April 2015

*See www.fypon.com for installation and maintenance instructions.

ARCHITECTURAL ORIGINS
1.800.446.3040



TODAY'S FEATURES



BEGINNINGS



ARCHITECTURAL PROGRESSION

COUNTRY/COTTAGE: CAPE COD

Steep roof lines with dormers are the most well-known details of the Cape Cod style. These homes often use clapboard shingles for siding, or wood shake for siding and roofing. Design elements are symmetrical, and include windows with wide white trim or shutters, a centered front door with pilasters or a large, central chimney.

CAPE COD STYLE

IDENTIFYING FEATURES:

- Low, broad-frame building, generally a story and a half
- Steep pitched roof with end gables
- Very little ornamentation
- Central front door surrounded by two multi-paned windows on each side
- Prominent use of shutters



SQUARE TOP RAIL*

BTRS6X96 • Smooth **NEW**



SQUARE BOTTOM RAIL*

BBRS6X96 • Smooth **NEW**



RAIL SUPPORT BLOCK*

RSB4X3X6 • Smooth **NEW**



TRIM COLLAR-FANCY*

TC6F • Smooth **NEW**



NEWEL POST-
STRAIGHT PANEL*

NPSP6X48 • Smooth **NEW**



NEWEL POST-
CORNER PANEL*

NPCP6X48 • Smooth **NEW**



LOUVER*

TRLVG60X25 • Smooth **NEW**

LOUVERED
SHUTTERS

As seen on page 50 of
Polyurethane Catalog

FLAT POST TOP

As seen on page 184 of
Polyurethane Catalog

SQUARE
BALUSTER

As seen on page 176 of
Polyurethane Catalog

9" CROSSHEAD
WITH BOTTOM TRIM

As seen on page 13 of
Polyurethane Catalog



COUNTRY/COTTAGE: INTERIOR

CROWN **NEW**

MLD1036-12 • Smooth



BASEBOARD **NEW**

MLD1042-12 • Smooth



CHAIR RAIL

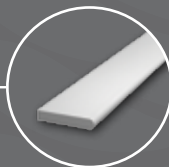
As seen on page 84 of
Polyurethane Catalog

BEAM

As seen on page 133 of
Polyurethane Catalog

SILL **NEW**

MLD1007-12 • Smooth



VARIETY COMES STANDARD
INCREDIBLE RANGE OF PRODUCTS & SIZES
FOR ALMOST ANY PROJECT





TODAY'S TRADITIONAL

Today's Traditional homes mix style with practicality, and Old World touches with updated charm. There are many variations of Today's Traditional. There may be regional differences, a blending of architectural traits, or the addition of design elements that reflect a homeowner's personal taste. However, each look is rooted in historical styles. Interiors follow the architectural choices made for the home's exterior, but tend to simplify the historic designs that inspired them. The style is elegant, but with personal touches that give rooms and exteriors a less formal air.

TODAY'S TRADITIONAL STYLE

IDENTIFYING FEATURES:

- Asymmetric entry door with transom windows above
- Entry porch that engages with the public sidewalk and street
- Straight columns with minimal detail at base and cap
- Raised panel shutters and decorative or functional louvers



SQUARE TOP RAIL*

BTRS6X96 • Smooth **NEW**



SQUARE
BOTTOM RAIL*

BBRS6X96 • Smooth **NEW**



RAIL SUPPORT
BLOCK*

RSB4X3X6 • Smooth **NEW**



TRIM

FLT100-12 • Smooth



SQUARE BALUSTER

BAL2X16SQ • Smooth



PLAIN SQUARE
COLUMN

COL8X96FBTSQ • Smooth



9" CROSSHEAD

With Bottom Trim • Smooth



SHUTTERS

SH18X66DP • Smooth



EYEBROW LOUVER

EBLV12X24 • Smooth



TODAY'S TRADITIONAL: INTERIOR

CROWN **NEW**
MLD1029-12 • Smooth



CASING **NEW**
MLD1031-12 • Smooth



MODERN MATERIAL

LONGER-LASTING, LOWER MAINTENANCE
ALTERNATIVE TO WOOD ON TODAY'S HOMES

APRON **NEW**
MLD1033-12 • Smooth



BASEBOARD **NEW**
MLD1034-12 • Smooth



MOISTURE RESISTANT

IDEAL FOR MOISTURE-PRONE INTERIOR SPACES
LIKE KITCHENS, BATHROOMS & BASEMENTS



BEAUTY WITHOUT BOUNDARIES



Fypon® products are specially designed to perform beautifully in any area of a home. That includes moisture-prone spots like kitchens, bathrooms, and even basements.

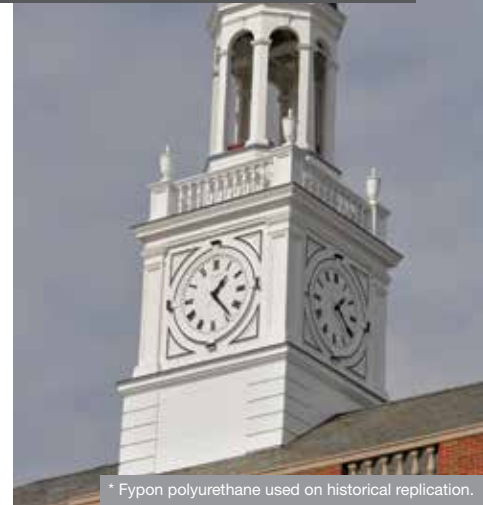
Our products are made of polyurethane, so you don't have to compromise your design capabilities. And you'll give homeowners the peace of mind of knowing that Fypon products resist moisture, insects, rotting, warping, cracking and peeling, as well as crumbling and deterioration.

Photos on the next two pages are meant for inspirational use.

THIS IS GOING TO BE **FUN!**



* Fypon polyurethane used on historical replication.



* Fypon polyurethane used on historical replication.



Creative. Custom. Fypon stands ready to be your design partner, and providing inspiration that still fits easily within your specifications. We offer fabricated products that look sophisticated, yet save time and labor in the field. Fypon also has the design and production capabilities needed to create custom millwork for virtually any requirement.

Contact us to learn more about our ideas for meeting your architectural needs, and exceeding your expectations.

To get started, fill out our Quote Request form at www.fypon.com.professional/distributor/quote.asp or call 855-397-6647.

THIS IS GOING TO BE FUN!
1.800.446.3040



For complete homeowner lifetime limited warranty details, exclusions and limitations, please see your purchase location or visit www.fypon.com.



available at:

To find the location nearest you,
visit www.millwork1.com.

©2015 Fypon, LLC. All rights reserved. Fypon and the Fypon Logo are trademarks of Fypon, LLC. Fypon, LLC, and its parent company Therma-Tru Corp. are part of Fortune Brands Home & Security, Inc. All trademarks are property of their respective owners.