



TruExterior[®]

Siding & Trim



So Authentic. So Reliable. Nothing Compares.

TruExterior® Siding & Trim offers real workability that exceeds that of wood without sacrificing the look, feel and character of traditional wood products, creating a balance of performance and aesthetics that cannot be found with other man-made alternatives.

Pictured: Shiplap, Channel Bevel
On the Cover: Nickel Gap, Channel







Cut. Fasten. Paint. Done.

It really is that simple. That's because TruExterior® Siding & Trim offers phenomenal performance, remarkable workability and a lasting look while eliminating the need for gluing, gapping and other cumbersome and costly installation techniques.

APPLICATION

- Designed for use in non-structural applications
- Suitable for ground contact
- Can be used in moisture-prone areas

EXPANSION & CONTRACTION

- No special precautions or adhesives are required to control or limit movement caused by moisture or temperature changes
- Traditional exterior-grade caulks, auto-body or wood fillers are all acceptable for filling nail holes

TOOLS

- Installed using proven woodworking tools and methods
- Carbide-tipped blades and bits are recommended for a longer tool life

FASTENING

- Accepts a wide variety of high-quality exterior-grade fasteners that are suitable for the local environment
- Can be fastened close to the edge
- No need for pre-drilling
- No mushrooming

PAINTING

- TruExterior® products come pre-primed and do require paint
- No need to prime end cuts
- Can be painted with any high-grade exterior paint when following the paint manufacturer's instructions
- Can be painted any color without special precautions as it is not prone to movement caused by heat gain from dark colors*
- Paint lasts longer than on wood because TruExterior® products cycle virtually no moisture*

*Please see TruExterior® Siding & Trim Limited Warranties and Product Data Sheets for proprietary test results, located at TruExterior.com. Always follow local building codes and construction best practices. See the complete Installation Guidelines for TruExterior® Siding & Trim at TruExterior.com.



Pictured: 4/4 Trim with Batten Strips

Pioneering an entirely new category of building materials made with the revolutionary poly-ash material.

TruExterior® Siding & Trim is the only product available today that **addresses both the moisture- and movement-related issues commonly seen with other exterior materials on the market.**

MOISTURE

TruExterior® products contain no wood fiber, preventing the moisture-related issues that commonly plague wood, wood composites and other fiber cement.

- Virtually no moisture cycling
- No need to prime ends or field cuts
- Resists rot and termite attacks*
- No swelling*
- No cracking or splitting
- No cupping or checking*
- Suitable for ground contact

MOVEMENT

TruExterior® products offer a high level of dimensional stability, eliminating many of the movement-related issues seen with PVC and vinyl.

- Maintains a high level of dimensional stability*
- Installation is the same regardless of the season
- No special precautions or adhesives to control or limit movement
- No need for special paints
- No limitations on paint colors

OUR PRODUCT OFFERING

With a complete offering of 5/8, 4/4, 5/4 and 2x trim, accessories, beadboard and siding, TruExterior® Siding & Trim has everything you need to create a polished and professional installation.

- Siding
- Beadboard
- Trim
- Accessories



Pictured: Cove/Dutch Lap

*Please see TruExterior® Siding & Trim Limited Warranties and Product Data Sheets for proprietary test results, located at TruExterior.com. Always follow local building codes and construction best practices. See the complete Installation Guidelines for TruExterior® Siding & Trim at TruExterior.com.



Pictured: Cove/Dutch Lap

Craftsman Collection™

The TruExterior® Siding Craftsman Collection™ offers a variety of authentic, full-thickness profiles with bold, defined shapes and the natural aesthetic of traditional wood siding, all without the maintenance and upkeep associated with exterior wood products.

Six historically and architecturally accurate profiles—Channel, Channel Bevel, Cove/Dutch Lap, Nickel Gap, Shiplap and V-Rustic—are the ideal solution for homeowners who desire the look, feel and character of authentic wood siding while avoiding rotting, cracking, splitting and termite attacks.



Pictured Top Left to Right: Channel, Nickel Gap

Pictured Bottom Left to Right: Nickel Gap, Channel Bevel

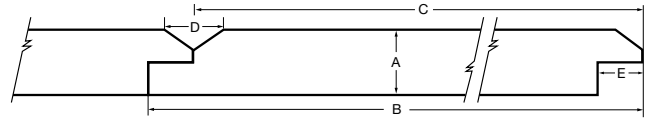
V-RUSTIC

The V-Rustic profile features a deep "V" groove that creates an appealing shadow line effect.

Available Finish:



Nominal Size	Actual Thickness (A)	Actual Width (B)	Reveal (C)	Channel (D)	Tongue (E)
1 x 6	0.6875"	5.50"	5.0"	0.625"	0.50"
1 x 8	0.6875"	7.50"	7.0"	0.625"	0.50"
1 x 10	0.6875"	9.50"	9.0"	0.625"	0.50"



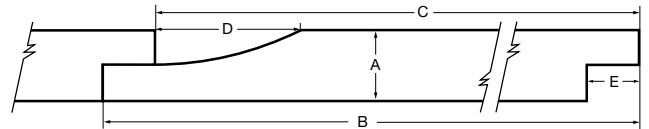
COVE/DUTCH LAP

The Cove/Dutch Lap profile features a subtle curve that creates a unique, eased appearance.

Available Finish:



Nominal Size	Actual Thickness (A)	Actual Width (B)	Reveal (C)	Channel (D)	Tongue (E)
1 x 6	0.6875"	5.50"	4.969"	1.469"	0.531"
1 x 8	0.6875"	7.25"	6.719"	1.469"	0.531"
1 x 10	0.6875"	9.25"	8.719"	1.469"	0.531"



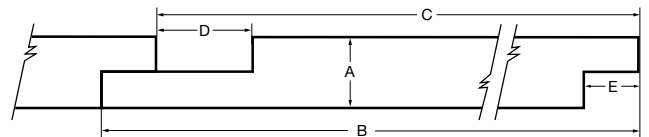
CHANNEL

The Channel profile's wide groove creates a rich shadow line effect.

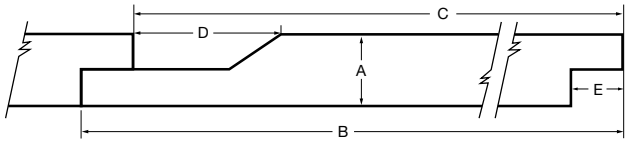
Available Finish:



Nominal Size	Actual Thickness (A)	Actual Width (B)	Reveal (C)	Channel (D)	Tongue (E)
1 x 6	0.6875"	5.50"	4.969"	0.969"	0.531"
1 x 8	0.6875"	7.25"	6.719"	0.969"	0.531"
1 x 10	0.6875"	9.25"	8.719"	0.969"	0.531"



Nominal Size	Actual Thickness (A)	Actual Width (B)	Reveal (C)	Channel (D)	Tongue (E)
1 x 6	0.6875"	5.50"	4.969"	1.469"	0.531"
1 x 8	0.6875"	7.50"	6.969"	1.469"	0.531"
1 x 10	0.6875"	9.50"	8.969"	1.469"	0.531"



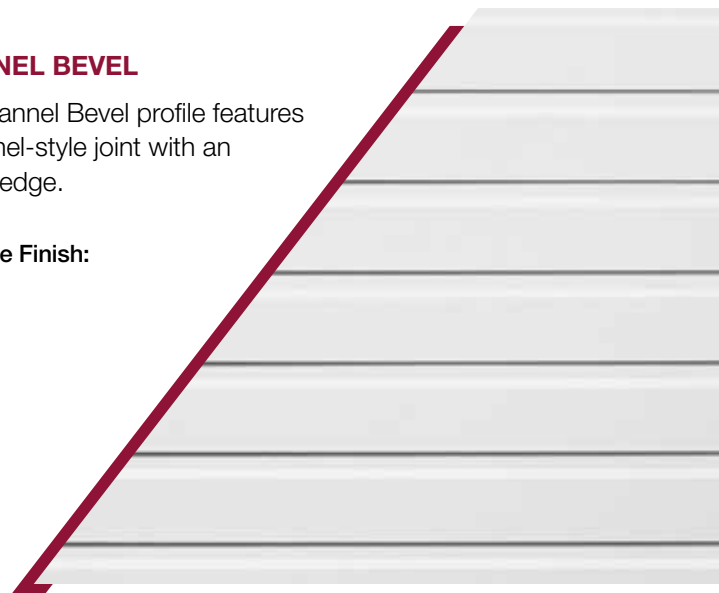
CHANNEL BEVEL

The Channel Bevel profile features a channel-style joint with an angled edge.

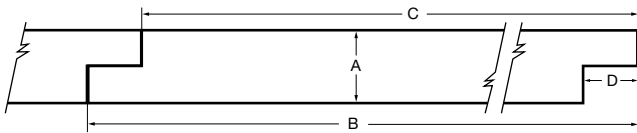
Available Finish:



smooth



Nominal Size	Actual Thickness (A)	Actual Width (B)	Reveal (C)	Tongue (D)
1 x 6	0.6875"	5.50"	4.969"	0.531"
1 x 8	0.6875"	7.25"	6.719"	0.531"
1 x 10	0.6875"	9.25"	8.719"	0.531"



SHIPLAP

The Shiplap profile is edge-matched for a tight joint appearance. It is intended to be installed with the finished surface exposed and is not reversible.

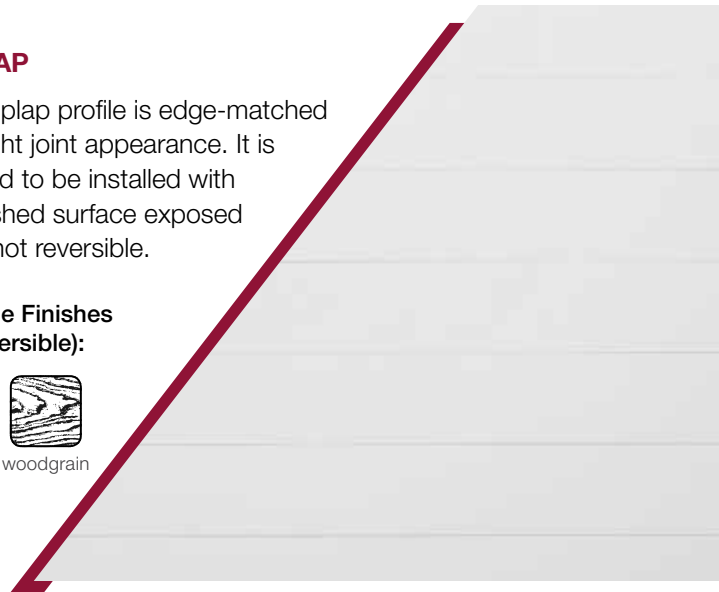
Available Finishes (not reversible):



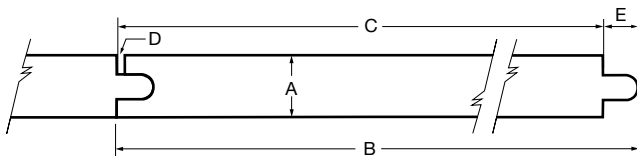
smooth



woodgrain



Nominal Size	Actual Thickness (A)	Actual Width (B)	Reveal (C)	Gap (D)	Tongue (E)
1 x 4	0.6875"	3.50"	3.159"	0.08"	0.341"
1 x 6	0.6875"	5.50"	5.159"	0.08"	0.341"
1 x 8	0.6875"	7.25"	6.909"	0.08"	0.341"
1 x 10	0.6875"	9.25"	8.909"	0.08"	0.341"



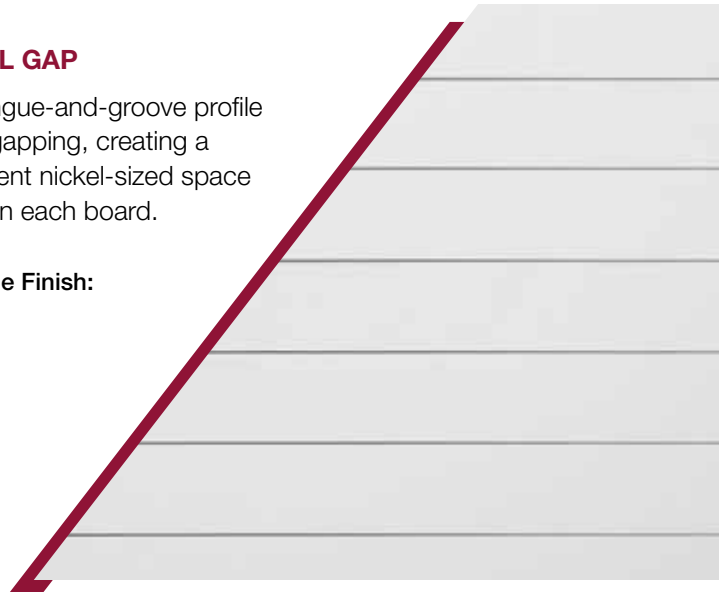
NICKEL GAP

The tongue-and-groove profile is self-gapping, creating a consistent nickel-sized space between each board.

Available Finish:



smooth





Beadboard

Including 4-inch, double-4 and double-6 profiles, TruExterior® Beadboard is ideal for porch ceilings, soffits and decorative wall applications, and allows for a variety of installations, as it can be attached in either parallel or perpendicular directions.

The high level of dimensional stability* allows the product to be installed 24" on center without the need for additional backing for added support. It's "tongue-and-groove" design allows it to be fastened through the tongue, resulting in a clean look free from visible fasteners, or it can be reversed to offer a contemporary "V-groove" appearance.





SINGLE BEADBOARD

Two distinct beaded patterns—4" and 6"—to suit the most popular design trends.

Available Finish:



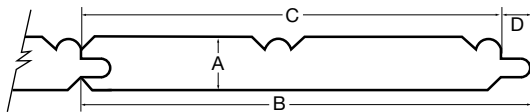
DOUBLE BEADBOARD

The same appearance as the single-profile products, but with twice the coverage.

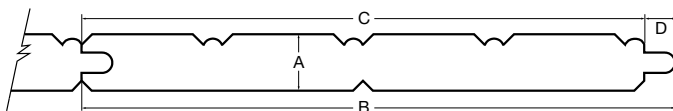
Available Finish:



Nominal Size	Actual Thickness (A)	Actual Width (B)	Reveal (C)	Tongue (D)
5/8 x 4	0.625"	3.50"	3.16"	0.34"
5/8 x 6	0.625"	5.25"	4.91"	0.34"



Nominal Size	Actual Thickness (A)	Actual Width (B)	Reveal (C)	Tongue (D)
5/8 x 8	0.625"	6.6825"	6.3425"	0.34"
5/8 x 12	0.625"	10.25"	9.91"	0.34"




*Please see TruExterior® Siding & Trim Limited Warranties and Product Data Sheets for proprietary test results, located at TruExterior.com.



Trim

Designed to be used in non-load-bearing applications, TruExterior® Trim is suitable for ground contact and moisture-prone areas, which makes it ideal for exterior trim applications such as fascia, door trim, soffits, rake boards and a variety of other applications. Because of its high level of dimensional stability,* there is no need to prime ends or field cuts. Plus, it can be painted any color. TruExterior® Trim accepts a wide variety of fasteners and can be installed using standard woodworking tools and methods.

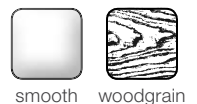




5/8 Trim Sizes		1X Trim Sizes		5/4 Trim Sizes		2X Trim Sizes	
Nominal	Actual	Nominal	Actual	Nominal	Actual	Nominal	Actual
—	—	—	—	—	—	2 x 2	1-1/2" x 1-1/2"
—	—	1 x 3	3/4" x 2-1/2"	5/4 x 3	1" x 2-1/2"	—	—
5/8 x 4	5/8" x 3-1/2"	1 x 4	3/4" x 3-1/2"	5/4 x 4	1" x 3-1/2"	2 x 4	1-1/2" x 3-1/2"
—	—	1 x 5	3/4" x 4-1/2"	5/4 x 5	1" x 4-1/2"	—	—
5/8 x 6	5/8" x 5-1/2"	1 x 6	3/4" x 5-1/2"	5/4 x 6	1" x 5-1/2"	2 x 6	1-1/2" x 5-1/2"
5/8 x 8	5/8" x 7-1/4"	1 x 8	3/4" x 7-1/4"	5/4 x 8	1" x 7-1/4"	2 x 8	1-1/2" x 7-1/4"
5/8 x 10	5/8" x 9-1/4"	1 x 10	3/4" x 9-1/4"	5/4 x 10	1" x 9-1/4"	2 x 10	1-1/2" x 9-1/4"
5/8 x 12	5/8" x 11-1/4"	1 x 12	3/4" x 11-1/4"	5/4 x 12	1" x 11-1/4"	2 x 12	1-1/2" x 11-1/4"

TruExterior® Trim is reversible with woodgrain on one side and a smooth finish on the reverse. 16' lengths are available in all sizes with 12' and 20' lengths available in 1X, 5/4 and 2X Trim (excluding 2 x 2) as special order.

Available Finishes:
(reversible)



smooth woodgrain

*Please see TruExterior® Siding & Trim Limited Warranties and Product Data Sheets for proprietary test results, located at TruExterior.com.

Accessories

TruExterior® Siding & Trim Accessories make it easy to create polished, professional-looking siding and trim installations. Decorative yet functional, the poly-ash accessories are designed to go where other materials can't, making them the perfect complement to cedar, fiber cement and other traditional siding products, as they are suitable for ground, roofline and masonry contact.



SKIRT BOARD

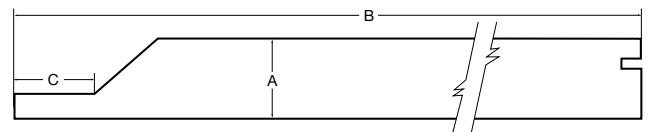
Provides a decorative yet functional way to create the required clearance between siding and grade.

Available Finishes:
(not reversible)



smooth woodgrain

Nominal Size	Actual Thickness (A)	Actual Width (B)	Tongue (C)
1 x 6	0.75"	5.50"	1.0"
1 x 8	0.75"	7.25"	1.0"
5/4 x 6	1.0"	5.50"	1.0"
5/4 x 8	1.0"	7.25"	1.0"



PLOWED FASCIA

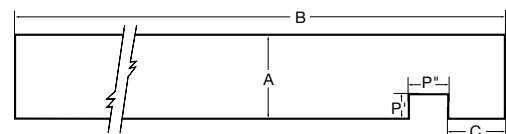
Rabbeted groove on the reverse accepts soffit panel for an easier install.

Available Finishes:
(not reversible)

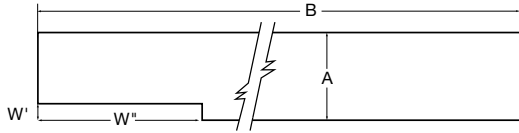


smooth woodgrain

Nominal Size	Actual Thickness (A)	Actual Width (B)	Distance to Edge (C)	Pocket (P' x P'')
1 x 6	0.75"	5.50"	0.625"	0.375" x 0.5"
1 x 8	0.75"	7.25"	0.625"	0.375" x 0.5"



Nominal Size	Actual Thickness (A)	Actual Width (B)	Window Pocket (W' x W'')
5/4 x 4	1.0"	3.50"	0.187" x 1.88"
5/4 x 6	1.0"	5.50"	0.187" x 1.88"
5/4 x 8	1.0"	7.25"	0.187" x 1.88"



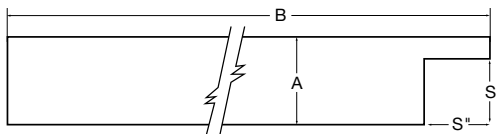
WINDOW POCKET RABBETED TRIM

The rabbeted groove helps trim to sit flush over the window's nailing flange, eliminating the need for cuts or shims.

Available Finishes:
(not reversible)



Nominal Size	Actual Thickness (A)	Actual Width (B)	Siding Pocket (S' x S'')
5/4 x 3	1.0"	2.50"	0.75" x 0.75"
5/4 x 4	1.0"	3.50"	0.75" x 0.75"
5/4 x 5	1.0"	4.50"	0.75" x 0.75"
5/4 x 6	1.0"	5.50"	0.75" x 0.75"
5/4 x 8	1.0"	7.25"	0.75" x 0.75"



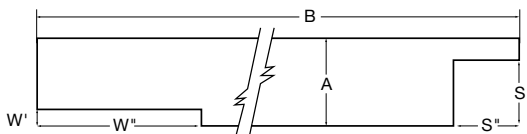
SIDING POCKET RABBETED TRIM

Perfect for end wall terminations, this trim with a 3/4" siding pocket accepts all TruExterior® Siding profiles.

Available Finishes:
(not reversible)



Nominal Size	Actual Thickness (A)	Actual Width (B)	Window Pocket (W' x W'')	Siding Pocket (S' x S'')
5/4 x 4	1.0"	3.50"	0.187" x 1.88"	0.75" x 0.75"
5/4 x 6	1.0"	5.50"	0.187" x 1.88"	0.75" x 0.75"
5/4 x 8	1.0"	7.25"	0.187" x 1.88"	0.75" x 0.75"



WINDOW AND SIDING POCKET RABBETED TRIM

The ultimate accessory to build a neat, professional-looking window surround.

Available Finishes:
(not reversible)



TruExterior® Siding & Trim Reference Guide

SUSTAINABILITY

The sustainable properties of TruExterior® Siding & Trim are a result of a combination of proprietary polymer chemistry and highly refined, recovered coal combustion products (fly ash), which are endorsed by the U.S. Green Building Council (USGBC) for use in construction materials.

- Cradle to Cradle Certified™
- Contains a minimum of 70% recycled content—verified by SCS Global Services



CODE LISTINGS

TruExterior® Siding & Trim have undergone rigorous internal and third-party testing to provide building officials, architects, contractors, specifiers, designers and others with reliable, high-performing products.




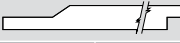

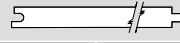
- PEI Evaluation Service Report ESR-14090—Trim and Beadboard
- PEI Evaluation Service Report ESR-13069—Siding
- ICC-ES Evaluation Report ESR-3597 verifies that TruExterior® Siding meets code requirements
- California's Wildland-Urban Interface (WUI) listed
- Florida Product Approval FL17285
- Texas Department of Insurance (TDI) ED-92

PROJECT ESTIMATOR



V-Rustic		Cove/Dutch Lap		Channel	
Nominal Size	Boards per square	Nominal Size	Boards per square	Nominal Size	Boards per square
1 x 6	15	1 x 6	15	1 x 6	15
1 x 8	11	1 x 8	12	1 x 8	12
1 x 10	9	1 x 10	9	1 x 10	9

Channel Bevel		Shiplap		Nickel Gap	
Nominal Size	Boards per square	Nominal Size	Boards per square	Nominal Size	Boards per square
1 x 6	15	1 x 6	15	1 x 4	24
1 x 8	11	1 x 8	12	1 x 6	15
1 x 10	9	1 x 10	9	1 x 8	11
				1 x 10	10

Craftsman Collection™ Siding

V-Rustic		Cove/Dutch Lap		Channel	
					
Nominal	Actual	Nominal	Actual	Nominal	Actual
1 x 6	11/16" x 5-1/2"	1 x 6	11/16" x 5-1/2"	1 x 6	11/16" x 5-1/2"
1 x 8	11/16" x 7-1/2"	1 x 8	11/16" x 7-1/4"	1 x 8	11/16" x 7-1/4"
1 x 10	11/16" x 9-1/2"	1 x 10	11/16" x 9-1/4"	1 x 10	11/16" x 9-1/4"
Channel Bevel		Shiplap		Nickel Gap	
					
Nominal	Actual	Nominal	Actual	Nominal	Actual
1 x 6	11/16" x 5-1/2"	1 x 6	11/16" x 5-1/2"	1 x 4	11/16" x 3-1/2"
1 x 8	11/16" x 7-1/2"	1 x 8	11/16" x 7-1/4"	1 x 6	11/16" x 5-1/2"
1 x 10	11/16" x 9-1/2"	1 x 10	11/16" x 9-1/2"	1 x 8	11/16" x 7-1/4"
				1 x 10	11/16" x 9-1/4"





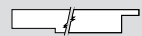
Beadboard

Single		Double	
			
Nominal Size	Actual	Nominal	Actual
5/8 x 4	5/8" x 3-1/2"	5/8 x 8	5/8" x 6-11/16"
5/8 x 6	5/8" x 5-1/4"	5/8 x 12	5/8" x 10-1/4"

Trim

5/8 Trim Sizes		1X Trim Sizes		5/4 Trim Sizes		2X Trim Sizes	
Nominal	Actual	Nominal	Actual	Nominal	Actual	Nominal	Actual
—	—	—	—	—	—	2 x 2	1-1/2" x 1-1/2"
—	—	1 x 3	3/4" x 2-1/2"	5/4 x 3	1" x 2-1/2"	—	—
5/8 x 4	5/8" x 3-1/2"	1 x 4	3/4" x 3-1/2"	5/4 x 4	1" x 3-1/2"	2 x 4	1-1/2" x 3-1/2"
—	—	1 x 5	3/4" x 4-1/2"	5/4 x 5	1" x 4-1/2"	—	—
5/8 x 6	5/8" x 5-1/2"	1 x 6	3/4" x 5-1/2"	5/4 x 6	1" x 5-1/2"	2 x 6	1-1/2" x 5-1/2"
5/8 x 8	5/8" x 7-1/4"	1 x 8	3/4" x 7-1/4"	5/4 x 8	1" x 7-1/4"	2 x 8	1-1/2" x 7-1/4"
5/8 x 10	5/8" x 9-1/4"	1 x 10	3/4" x 9-1/4"	5/4 x 10	1" x 9-1/4"	2 x 10	1-1/2" x 9-1/4"
5/8 x 12	5/8" x 11-1/4"	1 x 12	3/4" x 11-1/4"	5/4 x 12	1" x 11-1/4"	2 x 12	1-1/2" x 11-1/4"

Accessories

Skirt Board		Plowed Fascia		Window Pocket Rabbeted Trim		Siding Pocket Rabbeted Trim		Window and Siding Pocket Rabbeted Trim	
									
Nominal	Actual	Nominal	Actual	Nominal	Actual	Nominal	Actual	Nominal	Actual
1 x 6	3/4" x 5-1/2"	1 x 6	3/4" x 5-1/2"	5/4 x 4	1" x 3-1/2"	5/4 x 3	1" x 2-1/2"	5/4 x 4	1" x 3-1/2"
1 x 8	3/4" x 7-1/4"	1 x 8	3/4" x 7-1/4"	5/4 x 6	1" x 5-1/2"	5/4 x 4	1" x 3-1/2"	5/4 x 6	1" x 5-1/2"
5/4 x 4	1" x 3-1/2"			5/4 x 8	1" x 7-1/4"	5/4 x 5	1" x 4-1/2"	5/4 x 8	1" x 7-1/4"
5/4 x 6	1" x 5-1/2"					5/4 x 6	1" x 5-1/2"		
5/4 x 8	1" x 7-1/4"					5/4 x 8	1" x 7-1/4"		

Note: All TruExterior® products are available in standard 16' lengths.

12' and 20' lengths are also available in 1X, 5/4, and 2X Trim (excluding 2 x 2) as special order.



TruExterior[®]

Siding & Trim

TruExterior.com | 888-9BORAL9

Made in the USA



BORAL
BUILDING PRODUCTS

Atlantic[®] Premium Shutters | Builders Edge[®] | Foundry[®] Specialty Siding | Grayne[®] Engineered Composite Shingle
Kleer[®] | Mid-America Siding Components[®] | SturdiMount[®] | Tapco Tools[®] | TruExterior[®] Siding & Trim
Vantage[®] Shutters | Versetta Stone[®] | Wellcraft Egress Systems[®]